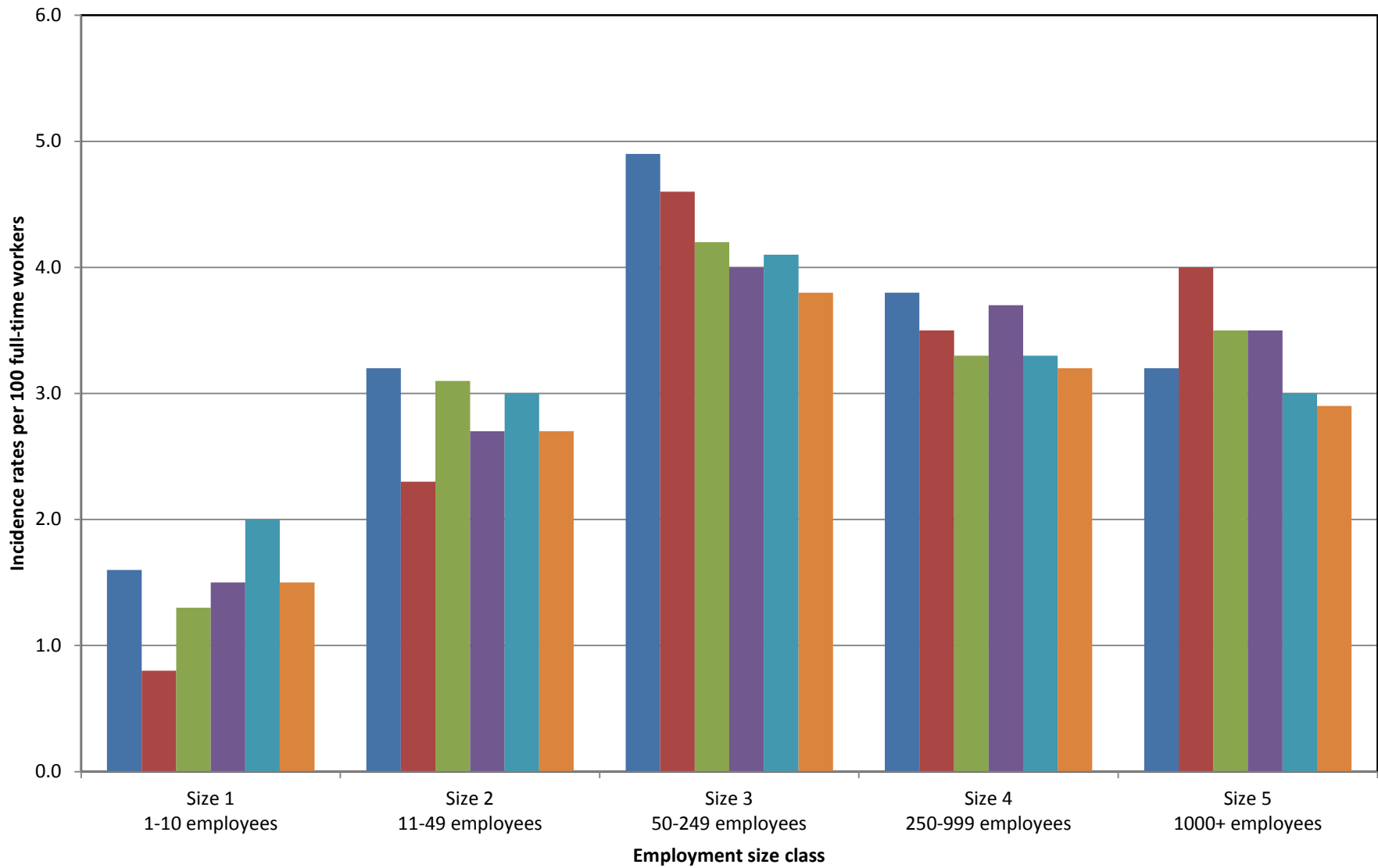


Incidence rates of Occupational Injuries and Illnesses by Size class, South Carolina, 2007-2012



* SOURCE: Bureau of Labor Statistics, U.S. Department of Labor, Survey of Occupational Injuries and Illnesses in cooperation with participating State agencies.

Year	Ownership	TEI	Size 1 1-10 employees	Size 2 11-49 employees	Size 3 50-249 employees	Size 4 250-999 employees	Size 5 1000+ employees
2007	50	000000	1.6	3.2	4.9	3.8	3.2
2008	50	000000	0.8	2.3	4.6	3.5	4.0
2009	50	000000	1.3	3.1	4.2	3.3	3.5
2010	50	000000	1.5	2.7	4.0	3.7	3.5
2011	50	000000	2.0	3.0	4.1	3.3	3.0
2012	50	000000	1.5	2.7	3.8	3.2	2.9